



Mezzanine RailGuard

Industry Uses:

- Distribution
- Manufacturing
- Automotive
- Retail

Features:

Heavy-Duty

With a name like “Beast”, it’s only fitting that our material comes standard in the heaviest gauge of wire mesh on the market, fully framed.

Meets ANSI MH 28.3

When properly installed, BeastWire Mezzanine RailGuard meets the requirements of ANSI MH 28.3, while providing additional protection over the traditional handrail.

Adaptable

BeastWire standard RailGuard panels are available in 10-gauge 2” welded wire mesh and includes 1-1/4” x 1-1/4” x 1/8” angle frame around each panel. These panels can also be installed above or below mezzanines when full height coverage is needed.

Easy To Build

All parts are fully integrated into a single system eliminating the need for welding panels into existing openings. Because of BeastWire’s unique design, installation of the RailGuard system is quick and efficient—saving time and money.

Reliable

Backed by our unrivaled 10-year warranty.



BeastWire RailGuard is a full handrail system including a wire mesh infill and optional kickplate, using all standard BeastWire components.

BeastWire RailGuard wire mesh infill panels prevent projectiles & other falling objects from exiting elevated work platform or catwalk along the handrail, stairwell, and pallet drop area.

Unrivaled strength, BeastWire partitions are built to last.



Panels

Standard in one-foot increments up to 8' wide and 3' high to achieve a 42" high handrail per code, constructed of 10-gauge wire welded in a 2" square mesh pattern, welded securely into a 1-1/4" x 1/8' thick angle frame.

Options: Available in other woven wire mesh patterns including 1" square, and 1-1/2" diamond.



Gate Options

Single and bi-parting hinged gates available. Standard with a padlock hasp. Optional spring hinges are also available. Please note that code may require separate fall protection to protect the elevated platform edge when the gate is open. Engineered dual pivoting gate systems are now also available.

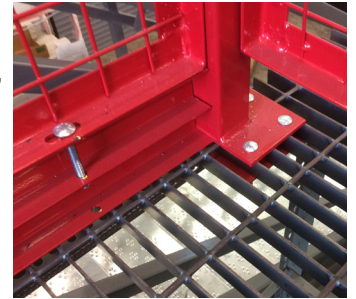
Mounting Options

- Uses a 42" high, 2" x 2" 14-gauge square tube post welded to a punched base plate.
- Standard base plates are 4" x 4" x 1/4" offset to allow guarding system to fit close to the ledge.
- **Optional:** 2" x 7" x 1/4" base plates
- Base plates are punched for 3/8" anchoring hardware.
- **Optional:** Separate base plates are available to mount to grated platforms.
- Plastic caps are provided for the tops of each post.
- Some corners may only require one carriage bolt connection so long as the other side of the panel is connected to its post with at least two bolts.



Kick Plates

Optional kickplates consist of (2) 2" x 1-1/4" channels (BeastWire growth plate) punched to bolt through to the bottom of infill panels when a kickplate is not designed as part of the elevated platform. These growth plates can be cut and notched in the field, as required.



Rail System

RailGuard uses 2" x 2" x 14-gauge square tube post as a top handrail. A handrail is punched with 4 holes to pass connection hardware through to wire mesh panel below. Utilizes carriage bolts and plastic extruded carriage bolt adapters to prevent catch points or dimpling of the railing when tightened.



www.BeastWireMesh.com

711 South Commerce Drive, Seymour, IN 47274

Ph: (800) 841-0680 • Fax: (800) 428-5758

SPACEGUARD
PRODUCTS